



# GMT MONTHLY MEMBERSHIP PROGRESS REPORT

Results as of: 5/31/2018

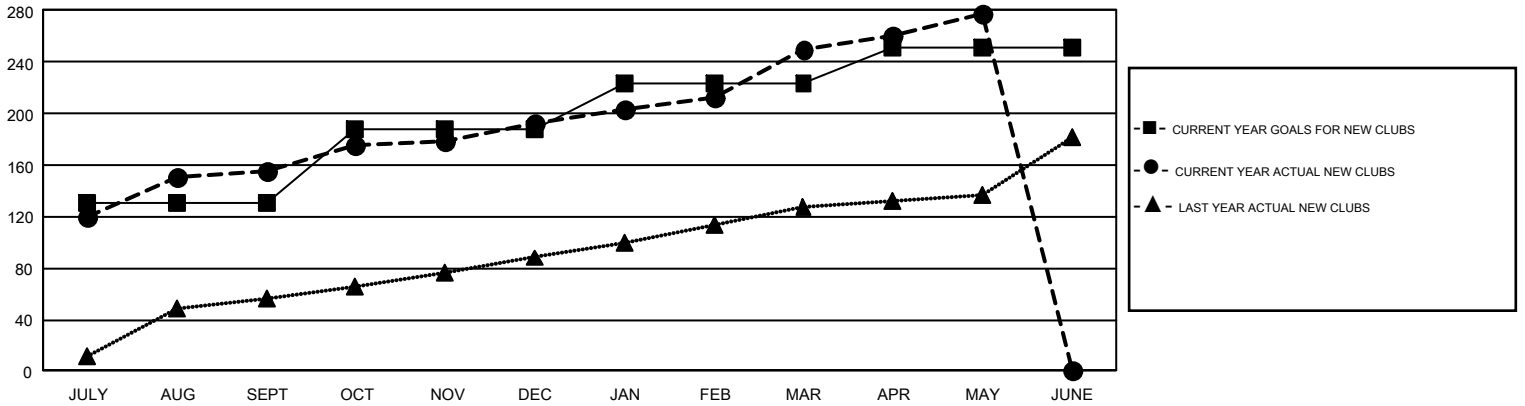
## GMT Constitutional Area 6, Group A

GMT: SWADESH RANJAN SAHA

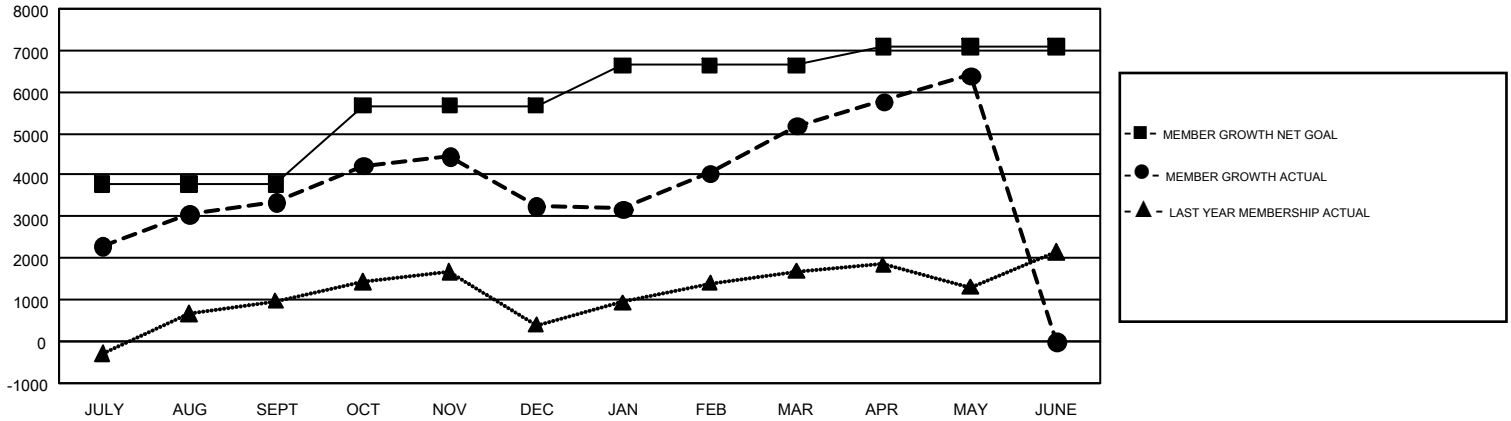
REPORT DOES NOT INCLUDE CLUBS IN UNDISTRICTED AREAS.

Clubs				Members			
RESULTS FOR 2017-2018				RESULTS FOR 2017-2018			
QUARTER	NEW CLUB GOAL	NEW CLUBS	DROPPED CLUBS	QUARTER	MEMBER GROWTH NET GOAL	MEMBER GROWTH ACTUAL	DROPPED MEMBERS ACTUAL (including transfers)
JULY/AUG/SEPT	130	155	7	JULY/AUG/SEPT	3,782	4,994	1,520
OCT/NOV/DEC	57	38	67	OCT/NOV/DEC	1,885	2,085	2,117
JAN/FEB/MAR	37	56	12	JAN/FEB/MAR	974	4,218	1,256
APR/MAY/JUNE	27	29	4	APR/MAY/JUNE	457	3,144	1,649

GOALS AND ACTUAL NEW CLUBS CUMULATIVE



GOALS AND ACTUAL MEMBERS CUMULATIVE



DROPPED CLUBS: 90	1,085 CLUBS OF 1,725 ADDED 1 OR MORE NEW MEMBERS	<b>GENDER DISTRIBUTION</b> MALE 40,505 (74.06%) FEMALE 14,187 (25.94%)
<b>DROPPED MEMBERS</b> DECEASED 114 CLUB CANCELLED 1,829 OTHER 4,584 <b>TOTAL 6,527</b>	<a href="#">CLICK HERE FOR CUMULATIVE MEMBERSHIP DATA</a>	TOTAL FAMILY UNIT MEMBERS 22,430 FAMILY MEMBERS PAYING HALF DUES 13,557